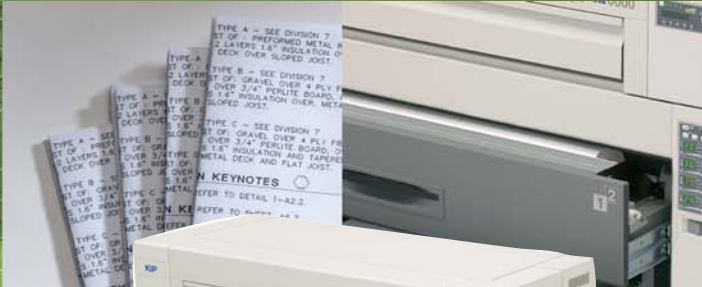
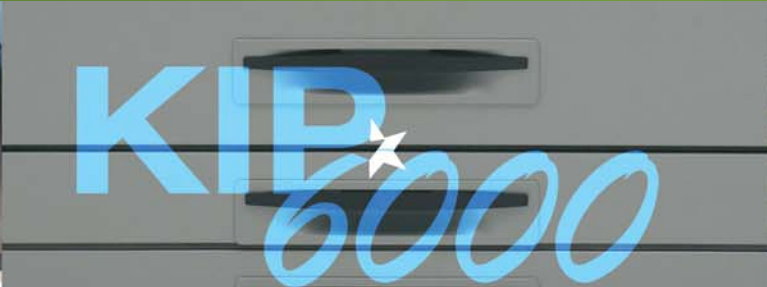


KIP 6000



WORKGROUP PRINT SYSTEM

KIP



# CONSIDER THE POSSIBILITIES

## Key Features

- Award winning HDP Technology
- 8 'D' size prints per minute
- Upgradeable media capacity 2 or 4 rolls.
- Network printer or full scan-to-file system
- Modular design for easy upgrade path
- Add KIP monochrome or mono/color scanner
- Range of available scan speeds
- Integrated with KIP software

## Versatile by Design

The KIP 6000 delivers an impressive range of production possibilities to ensure maximum efficiency with minimum operator effort. Outstanding quality and low operational costs make the KIP 6000 the perfect solution for medium volume printing environments.

An output speed of 8 'D' size prints per minute and a choice of two or four media rolls make the KIP 6000 the perfect system for mid volume wide format production.

## High Definition Print Technology

Reduced dot size, high print resolution and image smoothing technology (IST) provide exceptional quality, high definition lines, distinctive grayscales and consistent solid areas.



Model Number	Starprint 6002	Starprint 6004	Starprint 6052STF, 6054STF	Starprint 6082STF, 6084STF	Starprint 6122STF, 6124STF	Starprint 6202STF, 6204STF
Print Speed	8 D size/min	8 D size/min	8 D size/min	8 D size/min	8 D size/min	8 D size/min
Number of Rolls (up to 36")	2 roll	4 roll	2 or 4 roll	2 or 4 roll	2 or 4 roll	2 or 4 roll
Scanner Model (Single or Dual Footprint)	n/a	n/a	2050	2080	2120	2200 mono/color
Scan Speed @ 400dpi	n/a	n/a	2.0 ips	3.2 ips	4.8 ips	4.8 ips/2.0 ips

# KIP 6000 SERIES FEATURES

## A Footprint for Any Environment

The KIP 6000 is available in a variety of footprint configurations. The scanner may be placed on top of the printer for a single space saving footprint, or separate from the printer, creating a dual-footprint setup. In addition, the KIP 6000 is available as a single footprint network printer with embedded controller.

## Calibrated LED Head Design

The print head design involves the individual calibration of all LED pixels. This unique process delivers a smoother and more consistent image quality for fine lines, grayscales and graphics.

## Contact Toner System

Non-magnetic, mono-component KIP 6000 toner technology provides 100% toner efficiency, without unnecessary carriers, developers or waste receptacles to purchase or replace.

## Easy User Interface

The KIP 6000 features an operator display that provides important system information. Users are informed of installed media roll sizes and quantity, toner levels and other key operational information. Functions such as trimming rolls, changing media types and image density settings may also be controlled from this display panel.

## Image Smoothing Technology

Using advanced data matching algorithms that examine the print data, IST enhances grayscale diagonal and curved line output to ensure optimal image quality with every print.



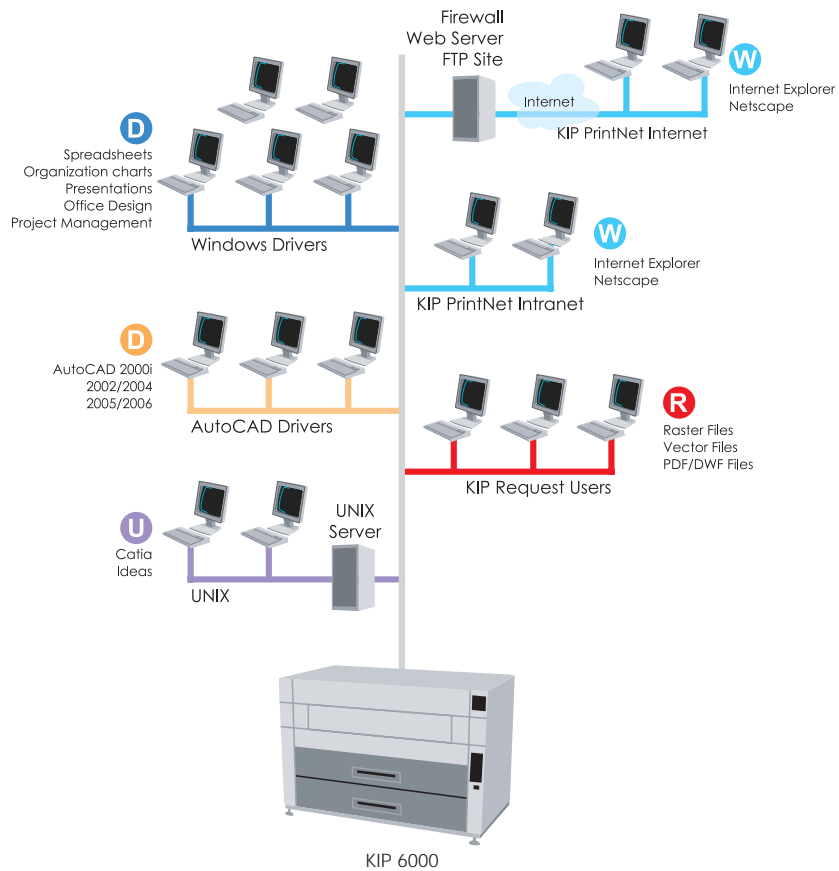
- 600 x 600 dpi
- 300 lines per inch
- ≤.0017" dot size
- ≤.0017" one pixel line width



*KIP 6000 printers operate at 100% toner efficiency. This provides lower toner consumption and no waste toner.*



# KIP PRINTING APPLICATIONS



## Get Connected

The KIP 6000 is designed to provide fast and easy network connectivity for any type of network environment. The widely adopted TCP/IP networking protocol standard for network communications is utilized. With reliable and flexible networking and the ability to manage and send a variety of files from virtually any type of application, a wide range of printing possibilities are realized from the KIP 6000.

- R** KIP Request is an easy-to-use application that provides remote users with an efficient method of printing single documents or collated sets through the network.
- W** KIP PrintNet is a web-based printing utility compatible with standard web browsers which shares a similar interface with KIP Request software.
- D** KIP AutoCAD drivers enable printing directly from AutoCAD® technical design applications.
- D** The KIP Windows driver enables printing directly from all types of Windows® based applications.
- U** Standard TCP/IP connectivity ensures easy integration with UNIX/Mac based software applications.



# KIP

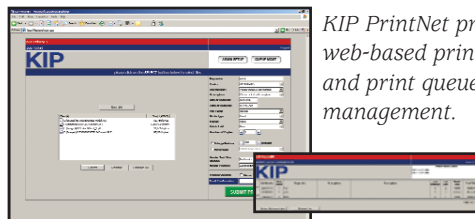
# KIP 6000 NETWORK PRINTER

## KIP Request

Network print jobs may be sent to the KIP 6000 by remote users of KIP Request® software. Jobs are transmitted to the print queue with required print size, number of copies or sets, media selection, stamping, folding and pen settings. Extensive print previewing capabilities allow users to inspect image settings before printing. In addition, KIP Request provides remote users with KIP 6000 status information and remote print queue viewing and management.

## KIP PrintNet

KIP PrintNet, a web-based printing utility, allows authorized users to select and send single or multiple files to KIP printers from standard web browsers. Due to a uniform interface, users of KIP Request software will be instantly familiar with the operation of KIP PrintNet, providing a seamless transition between online and offline operations.



*KIP PrintNet provides web-based printing and print queue management.*

## DWF and PDF Support

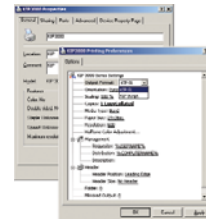
The DWF file format from Autodesk® is fully integrated with KIP digital printers and KIP network printing software. This feature allows users to view and print designs published to DWF format from Autodesk applications.

KIP Powerscript<sup>5</sup> provides KIP 6000 operators with the power to quickly and effectively interpret complex PostScript® and PDF® files into wide format prints.

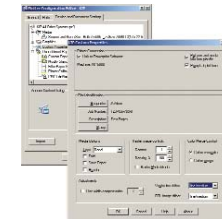
## KIP 6000 Print Drivers

The Windows driver supports Windows® printing features including set collation, fast spooling for multiple copies or sets, data tracking for job accounting and media selection.

The KIP AutoCAD drivers offer unique data tracking by username and job number. To assist in making printing decisions, two-way printer status allows users to view roll and media information.



*Windows Drivers for a wide range of print-ready applications.*



*AutoCAD Drivers for versions 2000-2006 are fully integrated with KIP Request.*

# KIP 6000 SCAN-TO-FILE SYSTEM

## Key Monochrome Scanner Features

- Range of scanning speeds to meet any requirement
- Internal memory for sets copying
- Touch screen interface and intuitive controls
- Mode memory stores up to 10 user defined settings
- Excellent connectivity options, including SCSI and TWAIN
- Maximum speed and high resolution

## KIP Mono/Color Scanner Features

- Dual function scan system - monochrome and color
- Designed for high production environments.
- True 600 x 600 dpi optical resolution
- Enhanced monochrome image quality
- Outstanding high fidelity color imaging
- Integrated with KIP and inkjet printers

## KIP Monochrome Scanners

KIP monochrome scanners are highly advanced wide format image capture devices designed to make precise information capture a fast, streamlined process regardless of original quality. The available range of scan speeds delivers reliable performance and outstanding quality, covering the total range of production demands.

## KIP Mono/Color Scanner

The KIP 2200 color and monochrome scanner provides high demand users with a unique combination of maximum speed and high resolution. Fully integrated with KIP and inkjet printers, the KIP 2200 scan system provides a full suite of state of the art software for color and monochrome copying and scan-to-file operations. True 600 x 600 dpi optical resolution scan quality is delivered from three independent imaging cameras and a touchscreen user interface that provides ease of use and comprehensive system status information.

The KIP 2200 scan system covers the full range of monochrome and color applications, from basic to advanced, while handling the work of two scanners from a single unit.



# FOLDING AND FINISHING OPTIONS

## **KIP 200 Stacker**

This compact, space saving print stacker can efficiently stack up to 250 prints. The adjustable paper stop plate easily accommodates 'A' to 'E' size prints and convenient casters provide mobility.

## **KIP 300 Stacker**

This compact, space saving print stacker is capable of efficiently stacking up to 350 prints. Prints are arranged by size, with 'D' and 'E' size prints coming to rest in the lower catch tray, and smaller prints stacking on the upper catch tray.

## **KIP 1000 Stacker**

This high capacity stacker holds up to 1000 'A' to 'E' size prints with convenient casters for mobile operations.

## **KIP 1200 Stacker**

The KIP 1200 stacker is a convenient and cost effective stacking system for 'A' to 'E' size prints. Up to 1,000 mixed size prints on bond, vellum or film are effortlessly collected on this intelligent online stacker.

## **KIPFold 6000**

The online KIP 6000 folder intelligently communicates with the KIP 6000 printer and is fully integrated with KIP software applications and printer drivers to provide seamless workflow integration. The system provides 8.5" x 11" packet and book folding capabilities up to 8 ft. in length and fan folding up to 15 ft. in length. The folder offers an output tray that stacks up to 50+ folded documents for collated sets.



*KIP 200 Stacker*



*KIP 300 Stacker*



*KIP 1000 Stacker*



*KIP 1200 Stacker*



*KIPFold 6000*

## KIP 6000 SERIES SPECIFICATIONS

### CONFIGURATION:

Single or Dual Footprint

### PRINTING METHOD:

LED Technology with HDP Plus

### PHOTORECEPTOR:

Organic Photoconductive Drum

### PRINT SPEED:

8 'D' size per minute

### RESOLUTION:

600 x 600 dpi

### MEDIA SIZE:

Maximum Print Width: 36"

Minimum Print Width: 11"

### MEDIA WEIGHT:

Plain Paper: 18 - 24 lb

Tracing Paper: 18 - 20 lb

Film: 3.5 - 4 mil

### WARM UP TIME:

Instant from standby

### FUSING METHOD:

Heat - pressure

### DEVELOPMENT METHOD:

Dry, non-magnetic mono-component toner

### INPUT POWER:

120V +6 or -10%, 50/60Hz, 20A

### DIMENSIONS:

50" (W) x 24" (D) x 35" (H)

### WEIGHT:

507 lbs. (2 roll version)

527 lbs. (4 roll version)

### ENVIRONMENTAL RATING:

Energy Star® Qualified

### PRINT LANGUAGES:

Supported data formats include:

- DWF
- PDF/PS3
- TIF Group 4, Cals Group 4, Government C4, Intergraph CIT/TG4, IBM IOCA, JPG, Uncompressed Grayscale TIF, Uncompressed Color TIF
- HPGL, HPGL/2, Calcomp 906/907, CGM, HP-RTL

### KIP APPLICATIONS AND DRIVERS:

- KIP Request provides an efficient method of reviewing and sending single files or collated sets for printing.
- KIP Driver Pack includes Windows and AutoCAD Drivers to enable printing from supported applications.
- KIP PrintNet is a web-based print utility compatible with standard web browsers.



### KIP AMERICA

Phone: (800) 252-6793

Email: [info@kipamerica.com](mailto:info@kipamerica.com)

Website: [www.kipamerica.com](http://www.kipamerica.com)

### KIP CANADA

Phone: (800) 653-7552

Email: [info@kipcanada.com](mailto:info@kipcanada.com)

Website: [www.kipcanada.com](http://www.kipcanada.com)

AutoCAD and DWF are registered trademarks of Autodesk Inc. Windows is a registered trademark of Microsoft. KIP 6000 and KIP Request are registered trademarks of KIP. All other product names mentioned herein are trademarks of their respective companies. All specifications are subject to change without notice.



# 6000 Series Printer Specifications



## Starprint 6000 Printer

The KIP Starprint 6000 series printers deliver 8 'D' size prints per minute (19'/min) without compromising quality or reliability. The printer may be configured with two 500 ft. media rolls (6002 model), four 500 ft. media rolls, or two rolls plus two cut sheet cassettes (2 x 125 sheets)(6004 model). Fully customizable to meet your requirements, KIP 6000 series products are available as network printers or as multifunction digital printer, copier and scan-to-file systems when connected to a KIP scanner. (models – 6052STF, 6054STF, 6082STF, 6084STF, 6122STF, 6124STF, 6202STF, 6204STF) Printer and scanner may be combined to create a single footprint unit, or separated into two freestanding components. Please refer to the KIP Scanning Systems section for scanner specifications.

## Features

- Print and scan-to-file simultaneously
- Multiple prints up to 999
- Automatic file detection
- Automatic roll selection/switching
- Ultra-fast file processing on the controller
- Pen management and dithering control
- Remote diagnostics

Technology	LED printer with KIP HDP Plus Technology
Dot Size	.0017"
One Pixel Line	.0017"
DPI	600 x 600
Speed	8 'D' size prints per min, 3.9" per sec
Media	2 roll, 4 roll or 2 roll/2 cut sheet cassette Each version includes media bypass.
Warm-up	Instant from standby 7 minutes from startup
Output	Minimum: 8.5" x 11" Maximum: 36" x 100+'
Media Types	Bond 16-20 lb, Film 3-3.5 mil., Vellum/tracing 16-20 lb, Tinted 16-24 lb
Dimensions	54" (W) x 24" (D) x 35" (H)
Weight	507 lbs. (2 roll version) 527 lbs. (4 roll version) 537 lbs. (2 roll /2 cut sheet version)
Power	Standby 604 W
Consumption	Printing 1900 W
Electrical Requirements	120V, 20 Amps
Safety Approvals	UL, CSA, FCC Class A

## KIP Embedded Controller

Platform	KIP software with Windows XP
Network	TCP/IP, NetBEUI (smb), Novell
Protocols	(IPX/SPX), LPR/LPD
File Formats	HPGL 1/2, HP-RTL, Calcomp 906/907, CALs Group 4, TIFF Group 4, PCX, Intergraph CIT/TG4, Versatec Color Graphics (VCGL), Uncompressed Grayscale TIFF, TIFF Packbits, IBM IOCA, EDMICS (C4), TLC (KIP), PNG, JPEG
Optional	ATA Complaint CGM
File Formats	Postscript level 3 for EPS, PS, and PDF

# 6000 Series Optional Accessories

---



## *KIP 200 Stacker*

This heavy duty print stacking system is capable of holding up to 500 'E' size prints. Complete with casters for mobile operations. An adjustable panel catches prints from 8.5" x 11" to 36" x 48".

## *KIP 300 Auto Stacker*

The KIP 300 Auto Stacker is a compact, space saving print stacker that is capable of efficiently stacking up to 250 prints.

## *KIP 1000 Super Stacker*

This heavy duty print stacking system is capable of holding up to 1000 'E' size prints. Complete with casters for mobile operations.

## *KIP 1200 Auto Stacker*

This heavy-duty print stacking system is capable of holding up to 1000 'D' size prints. Infrared communication with printer enables operations.

## *KIPFold 500*

The online KIPFold 500 system comes standard with fan folding capabilities up to 13 ft. in length. The folder offers an output tray that stacks up to 50+ folded documents for collated sets.

## *KIPFold 6000*

The online KIPFold 6000 folding system is configured to the specific print speed of the KIP printer. The system comes standard with 8.5" x 11" packet and book folding capabilities up to 8 ft. in length and fan folding up to 15 ft. in length. The folder offers an output tray that stacks up to 50+ folded documents for collated sets.

## *All-in-One Control Center*

The All-in-One Control Center gives users immediate access to the print queue and all printer functions, depending on their security level. This complete touch screen control center is a perfect solution for environments where the printer may not be near an external or STF PC, which is normally used to view the print queue or system status via the network. Regardless of where network PCs are located, the KIP All-in-One Control Center lets authorized users directly control the print queue, create print jobs and edit system settings right from the printer!