



## Ultimate Multifunction Performance

- Single Footprint Configuration
- Color Touch Controls
- Integrated Top Stacking
- 2 Media Roll Capacity
- 6 'D' Size Prints Per Minute



# KIP 7100

**The productivity of the KIP 7100 system is designed to satisfy the most demanding needs of decentralized users. The versatile KIP 7100 may also be expanded as a centralized network printer and simultaneously provide workgroups with multifunction convenience.**

### KIP 7100 Precision Design

The 7100 delivers fast and accurate copies and prints using toner based imaging technology that produces UV stable prints. 100% toner efficient KIP High Definition Print Technology ensures rich blacks and smooth gradients. Superior print, copy and scan resolution captures fine details with remarkable tone clarity, keeping reproductions true.

- ✓ Premier Performance & Quality
- ✓ Smart Eco<sup>2</sup> Design
- ✓ Color Touch Controls
- ✓ High Definition Print Technology
- ✓ 100% Toner Efficient- Zero Waste
- ✓ Energy Star Qualified System
- ✓ Recycled Paper Approved
- ✓ Components 97% Recyclable

### KIP 7100 System Expandability

The KIP 7100 provides operators with the flexibility to direct prints and copies to a preferred output destination – the integrated top stacking system and/or to an optional rear KIP stacking system for increased production. KIP 7100 systems deliver the best of both worlds: walkup convenience and production printing!



**MFP - Single Footprint System**



**Production Print Stacking**

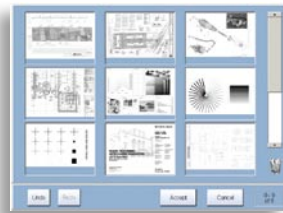


**Auto Stacking & Folding**



### KIP 7100 Touchscreen Printing

KIP 7100 provides the power of touch controls to view, scale, organize and print file sets from USB drives, CD's DVD's and network locations. Total operator efficiency is achieved through use of the KIP 7100 central touchscreen, the intuitive interface that displays all system control settings on one screen to enhance productivity.



**The ultimate in copy, scan and print technology is right at your fingertips.**

### KIP 7100 Print Management Software

KIP 7100 systems include powerful print management applications and certified drivers that can be accessed from an unlimited number of seats. A full featured web based print management application utilizes standard browsers to print to the KIP 7100 via a corporate intranet or over the internet. A full featured PC based printing application is provided to submit jobs via networks or FTP sites with the same powerful feature set.

- ✓ KIP Cloud Printing Web App
- ✓ KIP Cloud Scanning Web App
- ✓ Web & PC Based View & Print
- ✓ Windows 7 Certified 32 & 64 bit Driver
- ✓ AutoCAD 2011 Driver
- ✓ Cost Reporting for all Functions

### Ultimate Document Mobility

The integrated USB port provides convenient access to files stored on USB drives for instant viewing & printing of single documents or full collated sets. Originals may be scanned directly to a USB drive in a variety of file types, including multipage PDF, TIF & DWF formats.

- ✓ Conveniently integrated with KIP 7100 touchscreen
- ✓ Print sets from & scan to integrated USB port
- ✓ Streamlines mark-up document workflow
- ✓ Color scan with quality presets



### KIP 7100 Color Advanced

Powerful KIP Color Advanced software provides versatile color scan, copy and print applications designed to meet the demands of advanced operators from the KIP 7100 Touchscreen. KIP Color Advanced features powerful color copying and printing to wide format inkjets. KIP Color Advanced Scanning, Printing & Copying:



**Touchscreen Color Print**

- ✓ Integrates with single or multiple printers
- ✓ Color RIP system for graphic and technical files
- ✓ Professional output options, include nesting, paneling, collated sets printing & cropping
- ✓ Scan to Email, USB drives, mailboxes or network
- ✓ Supports a full range of color file formats

### KIP 7100 Cost Reporting

Dependent on system administration preferences, detailed reports may be generated to include times, dates, user names, job names, media used and related costs.

### Smart Eco<sup>2</sup> Design - Economical & Ecological

The Energy Star<sup>®</sup> qualified 7100 employs adjustable sleep modes to keep power consumption to a minimum while providing fast print times to keep busy workgroups moving. High yielding, 100% efficient high definition toner delivers on the promise of maximum system uptime.

### Environmental Responsibility



### KIP 7100 Certifications



U.S.A. ■ (800) 252-6793 ■ [info@kipamerica.com](mailto:info@kipamerica.com) ■ [www.kipamerica.com](http://www.kipamerica.com)  
Canada ■ (800) 653-7552 ■ [info@kipcanada.com](mailto:info@kipcanada.com) ■ [www.kipcanada.com](http://www.kipcanada.com)

REV\_11\_0202A